

## Target Notes

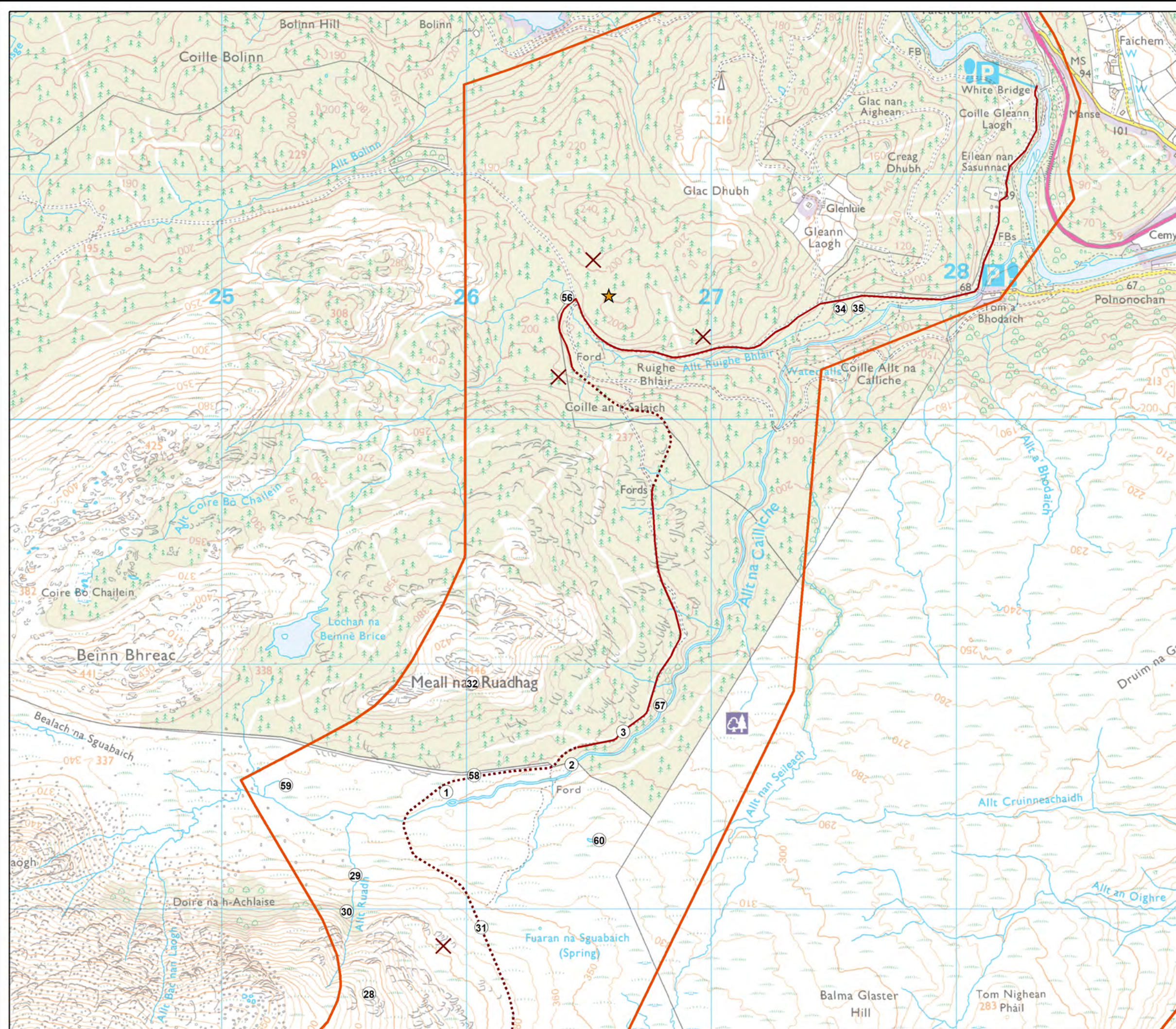
Target Notes	X	Y	Description
1	225919	798477	M23a Juncus effusus/acutiflorus-Galium palustre rush-pasture Juncus acutiflorus sub-community flush
2	226430	798590	M10a Carex dioica-Pinguicula vulgaris mire Carex demissa-Juncus bulbosus sub-community mire (flush)
3	226641	798723	H16 Calluna vulgaris-Arctostaphylos uva-ursi heath on knoll
4	225777	797230	Dwarf birch, Betula nana
5	224984	795954	Dwarf birch, Betula nana
6	226671	797185	Dwarf birch, Betula nana
7	227130	797002	Dwarf birch, Betula nana
8	222949	795266	M10a Carex dioica-Pinguicula vulgaris mire Carex demissa-Juncus bulbosus sub-community mire (flush)
9	223018	795542	CG11 outcrop with Purple saxifrage Saxifraga oppositifolia
10	224364	794709	Bog bilberry, Vaccinium uliginosum
11	223923	794708	Small lochan, partially dried up with U6 Juncus squarrosus-Festuca ovina grassland and bare scree on shores. Alpine clubmoss Diphasiastrum alpinum is also present
12	224549	794926	Alpine bearberry, Arctostaphylos alpinus
13	225007	794703	Alpine bearberry, Arctostaphylos alpinus
14	225278	794964	Dwarf juniper, Juniperus communis subsp. Nana
15	225095	794732	Bog bilberry, Vaccinium uliginosum
16	225409	795274	Cloudberry, Rubus chamaemorus
17	224635	794779	M10a Carex dioica-Pinguicula vulgaris mire Carex demissa-Juncus bulbosus sub-community mire (flush)
18	225284	795715	M6c Carex echinata-Sphagnum fallax/denticulatum mire Juncus effusus sub-community (flush)
19	225401	795871	M10a Carex dioica-Pinguicula vulgaris mire Carex demissa-Juncus bulbosus sub-community mire (flush)
20	225489	795932	M11b Carex dioica-Saxifraga aizoides mire Pallstriella commutata-Eleocharis quinqueflora sub-community mire (flush)
21	225729	796062	M10a Carex dioica-Pinguicula vulgaris mire Carex demissa-Juncus bulbosus sub-community mire (flush)
22	225850	796154	M10a Carex dioica-Pinguicula vulgaris mire Carex demissa-Juncus bulbosus sub-community mire (flush)
23	226608	796270	M32 Philonotis fontana-Saxifraga stellaris spring dominated by Dichondontium palustre and Breutelia chrycosoma
24	222237	795029	CG11 outcrop with Purple saxifrage Saxifraga oppositifolia, Roseroot Sedum rosea
25	222776	795125	Modified blanket bog with high % cover Hare's tail cotton grass, Eriophorum angustifolium and bare peat/hags
26	224980	795465	Dwarf birch, Betula nana
27	223257	794548	Dwarf cornel, Cornus suecica
28	225604	797654	Dwarf cornel, Cornus suecica
29	225548	798138	CG10a Festuca ovina-Agrostis capillaris-Thymus polytrichus grassland Trifolium repens-Luzula campestris sub-community, flushed grassland with high cover of Carnation sedge Carex panicea, Alpine bistort Persicaria bistorta amongst grassier assemblage dominated by Sheeps's fescue Festuca ovina and Seet-vernal grass Anthoxanthum odoratum with abundant Thyme Thymus polytrichus
30	225512	797990	Scattered Downy birch Betula pubescens on steeper ground above calcareous flush. Ground flora is dominated by grassy assemblage with scattered Thyme Thymus polytrichus, Flea sedge Carex pulicaris and Marsh violet Viola palustris in damper hollows with water ingress#

31	226062	797924	Transitional flushed grassland community with abundant Purple moor grass <i>Molinia caerulea</i> and Star sedge <i>Carex echinata</i> . Drier banks of burn are dominated by species-poor acid grassland
32	226025	798921	Stoney slope dominated by dry heath communities with abundant, but localised, patches of Bearberry <i>Arctostaphylos uva-ursi</i>
34	227529	800451	Wood ant nest
35	227601	800454	Wood ant nest
36	225692	796928	Flushed acid grassland with burn banks dominated by drier acid grassland punctuated by patches of Star sedge <i>Carex echinata</i> and Purple moor grass <i>Molinia caerulea</i> , and occasional Soft rush <i>Juncus effusus</i> . Habitat reflects mosaic of U4 acid grassland and M6-25 transitional acid flush/marshy grassland communities
37	226734	796742	Small stoney M10a <i>Carex dioica</i> - <i>Pinguicula vulgaris</i> mire <i>Carex demissa</i> - <i>Juncus bulbosus</i> sub-community mire (flush) where erosion of bank has occurred. Scattered Small yellow sedge <i>Carex demissa</i> and Bulbous rush <i>Juncus bulbosus</i>
38	225267	796338	Flushed calcareous grassland with abundant Grass of Parnassus <i>Parnassia palustris</i> , Thyme <i>Thymus polytrichus</i> and Flea sedge <i>Carex pulicaris</i>
39	222768	794817	Crag with small number of scattered Rowan <i>Sorbus aucuparia</i> and Downy birch <i>Betula pubescens</i>
40	223743	795315	Expanse of dry heath punctuated with small, narrow runnels of acid and calcareous grassland
41	225866	795308	In gullies between rockier knolls dominated by lichen heath, blanket bog communities abundant. Here blanket mire with rich Sphagnum carpet around a larger pool is present, with abundant Deergrass <i>Trichophorum germanicum</i> , Hare's-tail cotton grass <i>Eriophorum vaginatum</i> , Sphagnum papillosum, <i>S. capillifolium</i> , <i>S. subnitens</i> and <i>S. tenellum</i> . Commonly blanket mires are transitional between M17 and M19 NVC communities, with Deergrass and Heather <i>Calluna vulgaris</i> in annual abundance
42	226364	796074	Small pool with Bottle sedge <i>Carex rostrata</i> , reflecting S9 <i>Carex rostrata</i> swamp community
43	226749	796160	Small flush dominated by M15a <i>Trichophorum germanicum</i> - <i>Erica tetralix</i> wet heath <i>Carex panicea</i> - <i>Drosera rotundifolia</i> sub-community along narrow channel
44	229793	798415	Mature Juniper, <i>Juniperus communis</i> subsp. <i>communis</i> bush by roadside
45	229723	798348	Mature Juniper, <i>Juniperus communis</i> subsp. <i>communis</i> bush by roadside
46	229664	798278	Mature Juniper, <i>Juniperus communis</i> subsp. <i>communis</i> bush by roadside
47	229399	798015	Scattered Juniper, <i>Juniperus communis</i> subsp. <i>communis</i> bush in area of flushed wet heath/modified bog communities
48	229266	797688	Three Rhododendron <i>Rhododendron ponticum</i> bushes by roadside, associated with property
49	229137	797664	Scattered mature Juniper, <i>Juniperus communis</i> subsp. <i>communis</i> bushes in heath/bracken mosaic
50	229181	797649	Scattered mature Juniper, <i>Juniperus communis</i> subsp. <i>communis</i> bushes in heath/bracken mosaic
51	228666	797048	Mature Juniper, <i>Juniperus communis</i> subsp. <i>communis</i> bush
52	228625	796955	Small area of Rhododendron <i>Rhododendron ponticum</i> by roadside, with stand of mixed tree species
53	228486	796819	Scattered young Juniper <i>Juniperus communis</i> subsp. <i>communis</i> bushes at fringes of Gorse <i>Ulex europaeus</i> and basic flushes
54	228431	796708	Young Rhododendron <i>Rhododendron ponticum</i> regeneration and mature bushes within gorge
55	228283	796473	Scattered young Rhododendron <i>Rhododendron ponticum</i> regeneration along stretch of roadside approx 130 metres in length

## Target Notes

56	226413	800497	Wet woodland with Downy birch <i>Betula pubescens</i> over understorey of Soft rush <i>Juncus effusus</i> and Purple moor grass <i>Molinia caerulea</i>
57	226792	798832	Semi-natural Scot's pine <i>Pinus sylvestris</i> woodland over understorey of Purple moor grass <i>Molinia caerulea</i> with scattered Juniper <i>Juniperus communis</i> subsp. <i>communis</i> bushes
58	226033	798546	Small area of M2/3 bog pools with Sphagnum <i>cuspidatum</i> and Eriophorum <i>angustifolium</i>
59	225265	798505	Small area of M2/3 bog pools with Sphagnum <i>cuspidatum</i> and Eriophorum <i>angustifolium</i>
60	226544	798281	Small area of M2/3 bog pools with Sphagnum <i>cuspidatum</i> and Eriophorum <i>angustifolium</i>
61	226882	797176	Eroded area of peatland with M2/3 bog pools in wetter areas
62	224794	795546	Dwarf birch, <i>Betula nana</i>
63	226195	796064	Dwarf cornel, <i>Cornus suecica</i>
64	226455	796025	Larger area, scattered across 50m x 20m area) of M2/3 bog pools dominated by Sphagnum <i>cuspidatum</i>
65	226574	796144	Small area of M2/3 bog pools with Sphagnum <i>cuspidatum</i> and Eriophorum <i>angustifolium</i>
66	226937	796674	
67	227604	796201	Basic flush atypical of M10/11 flushes, dominated only by stoney ground and Small yellow sedge <i>Carex demissa</i> heavily grazed area of acid flush/grassland mosaic, with abundant Star sedge <i>Carex echinata</i> , Common sedge <i>Carex nigra</i> , Heath rush <i>Juncus squarrosus</i> and Bog asphodel <i>Narthecium ossifragum</i>
68	227194	795921	Acidic flush with canopy of Bog myrtle <i>Myrica gale</i>
69	226921	796064	Acidic flush with canopy of Bog myrtle <i>Myrica gale</i> and abundant Mat-grass <i>Nardus stricta</i>
70	226569	795906	Small area of M17a <i>Trichophorum germanicum</i> - <i>Eriophorum vaginatum</i> blanket mire Sphagnum sub-community with Sphagnum rich carpet and small areas of M2 bog pools
71	222455	794835	
72	222428	794696	Crag with Roseroot <i>Sedum rosea</i> , Mountain sorrel <i>Oxyria digyna</i> and Purple saxifrage <i>Saxifraga oppositifolia</i>
73	222701	795111	Crag with Roseroot <i>Sedum rosea</i> , Mountain sorrel <i>Oxyria digyna</i> and Purple saxifrage <i>Saxifraga oppositifolia</i>
74	222963	795144	Large, but narrow, erosion gully with expanse of bare peat and tussocks of Hare's-tail cotton grass <i>Eriophorum vaginatum</i>
75	223799	796379	Small area of bare peat Large area of eroded peatland within wider expanse of intact M17b <i>Trichophorum germanicum</i> - <i>Eriophorum vaginatum</i> blanket mire <i>Cladonia</i> sub-community. Area is hagged with expanse of bare peat and isolated clumps of Hare's-tail cottongrass
76	225114	794731	Wetter area of bog at edge of lochan with Few-flowered sedge, <i>Carex pauciflora</i>
77	224780	794770	Eroded bank with M15a <i>Trichophorum germanicum</i> - <i>Erica tetralix</i> <i>Carex panicea</i> - <i>Drosera rotundifolia</i> sub-community vegetation where water irrigates exposed peats

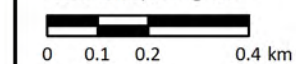




**Key**  
 Site Boundary  
 TargetNotes

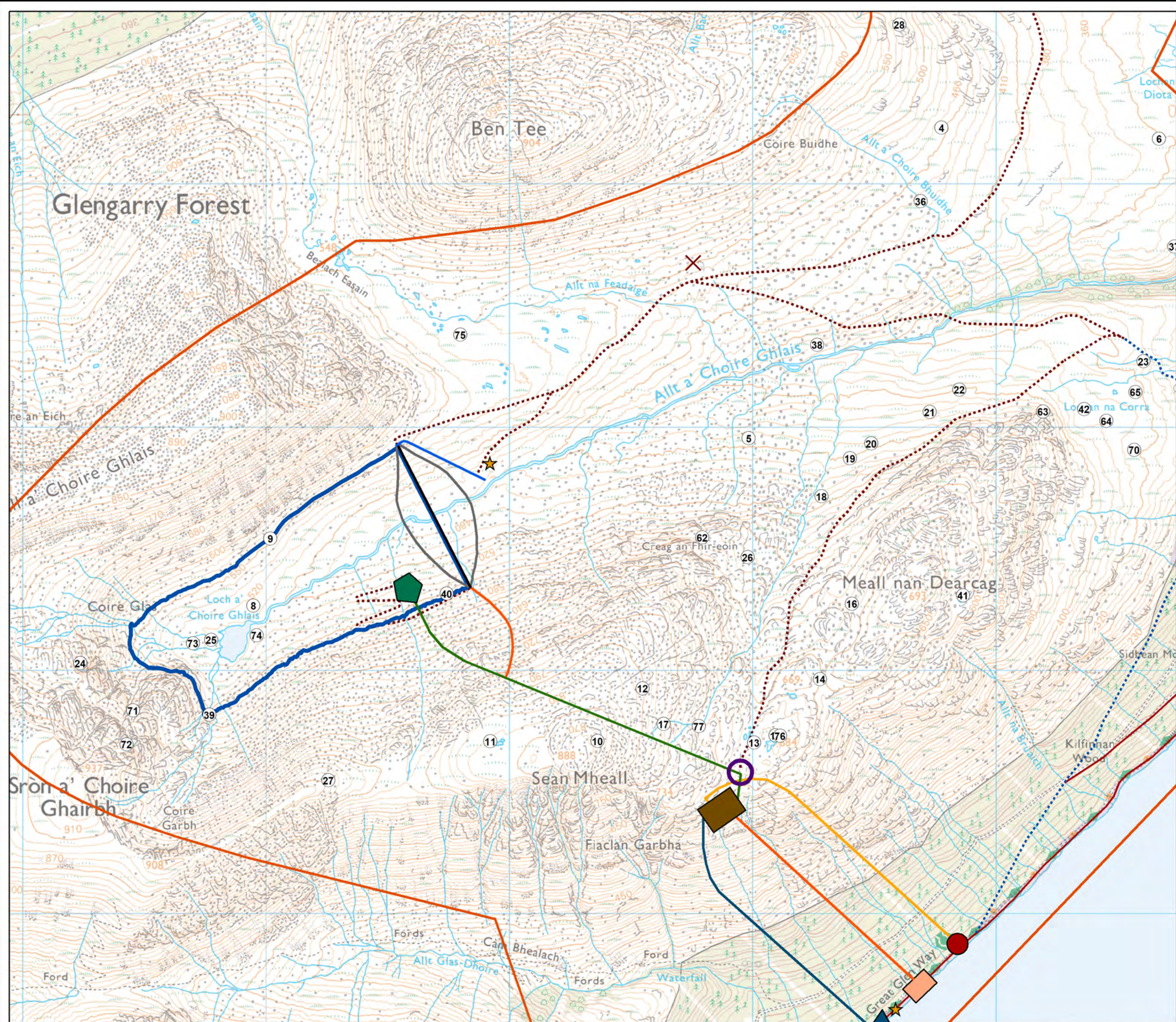
See Figure 3.1: Scheme Overview, for key to infrastructure

Scale 1:15,000 @ A3



**Figure 10.3.1**  
**Target Notes**





**Key**

- Site Boundary
- TargetNotes

See Figure 3.1: Scheme Overview,  
for key to infrastructure

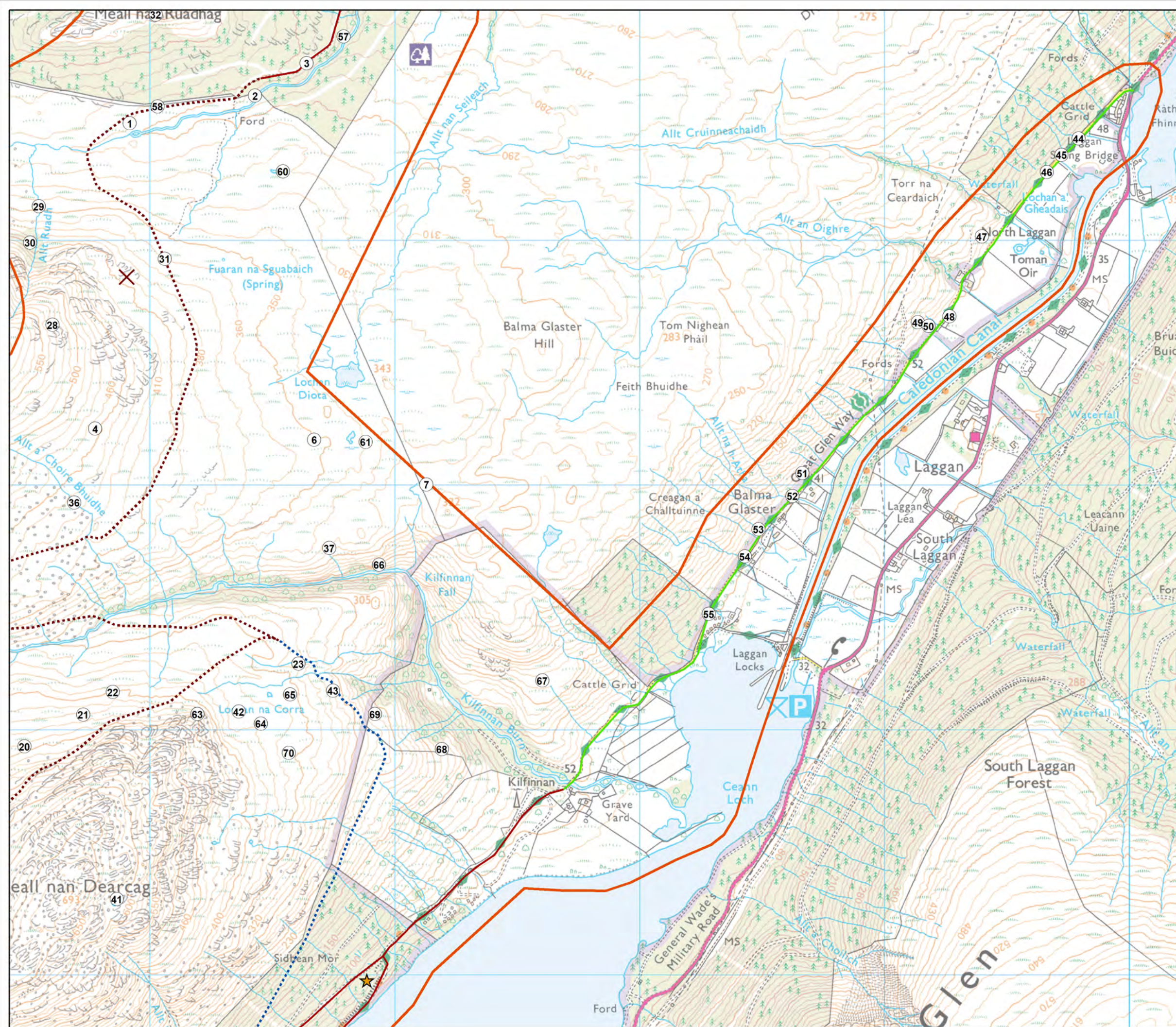
Scale 1:15,000 @ A3



**Figure 10.3.2**  
**Target Notes**

Reproduced from, or based upon the OS map with the sanction of HM Stationery Office Crown Copyright Reserved 100034870





**Key**  
 Site Boundary  
 TargetNotes

See Figure 3.1: Scheme Overview, for key to infrastructure

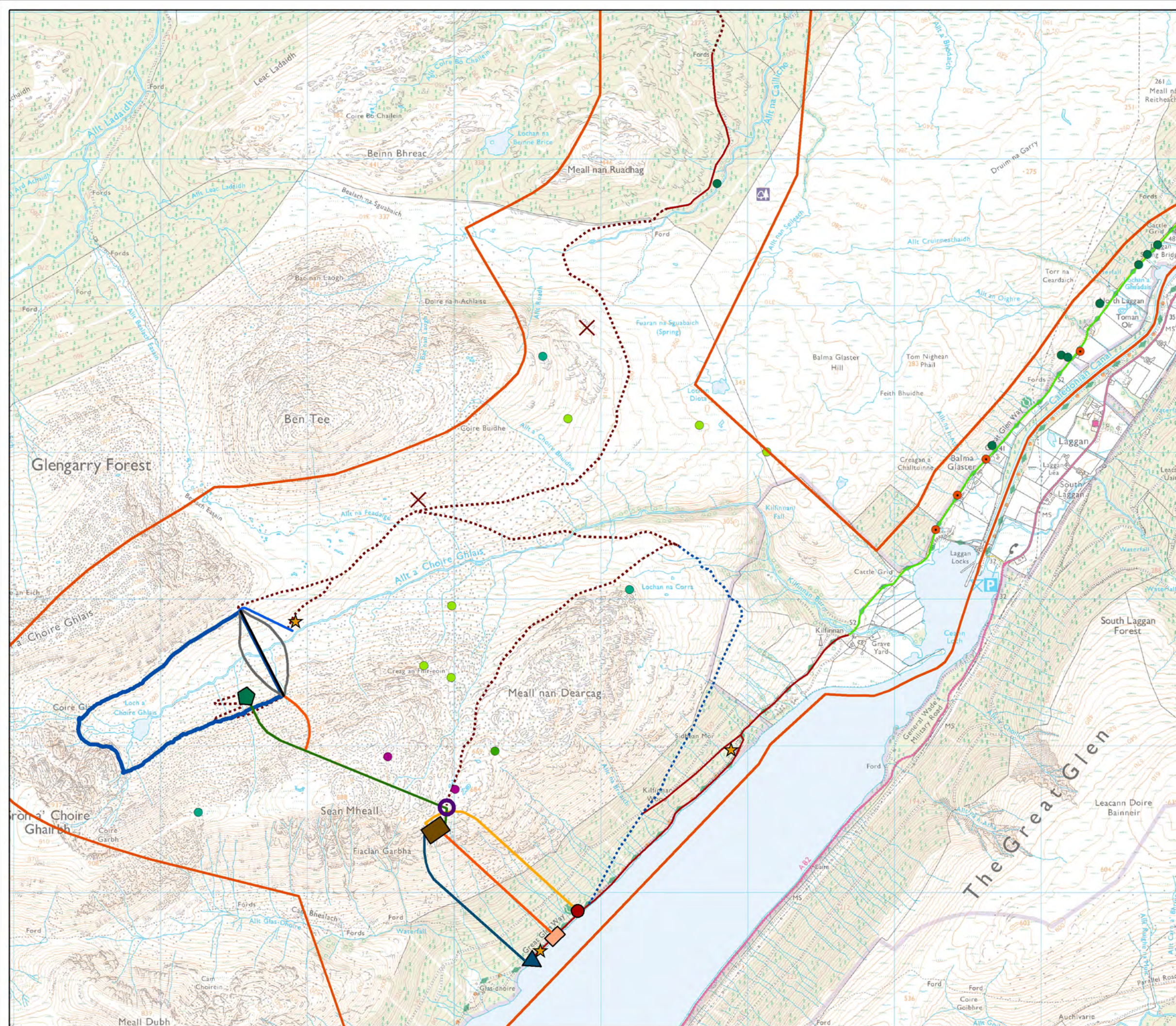
Scale 1:15,000 @ A3  
  
 0 0.1 0.2 0.4 km



**Figure 10.3.3**  
**Target Notes**

Reproduced from, or based upon the OS map with the sanction of HM Stationery Office Crown Copyright Reserved 100034870





- Key**
- Site Boundary
  - Sensitive species**
    - Alpine bearberry
    - Bog bilberry
    - Dwarf birch
    - Dwarf cornel
    - Dwarf juniper
    - Juniper  - Non-native/invasive species**
    - Rhododendron ponticum

See Figure 3.1: Scheme Overview, for key to infrastructure

Scale 1:25,000 @ A3



**Figure 10.3.4**  
**Sensitive and Non-native/Invasive Species**  
**Revised Coire Glas Pumped Storage Scheme**  
**EIA Report**